



PROFILE EROSION CONTROL SOLUTIONS

Metric Application Guide for Profile SMM, BFM, HP-FGM and ET-FGM

Application / Loading Procedures

- A. Strictly comply with equipment Manufacturer's installation instructions and recommendations. Use approved hydro-spraying machines with fan-type nozzle (50-degree tip) whenever possible to achieve best soil coverage. Apply from opposing directions to assure 100% soil surface coverage. Slope interruption devices or water diversion techniques are recommended according to the slope interruption limits table on the back.
- B. To ensure proper application rates, measure and stake area. For maximum performance, apply in a two-step process*:
 1. Apply specified prescriptive agronomic formulations along with 50% of seed with a small amount of SMM, BFM, HP-FGM or ET-FGM for visual metering.
 2. Mix balance of seed and apply SMM, BFM, HP-FGM or ET-FGM at a rate of 23 kilograms per 473 liters (see mixing section on the back for details) of water over freshly seeded surfaces. See loading chart on the back and confirm loading rates with equipment manufacturer. Do not leave seeded surfaces unprotected, especially if precipitation is imminent.
- C. Fill 1/3 of mechanically agitated hydroseeder with water. Turn pump on for 15 seconds and purge and pre-wet lines. Turn pump off.
- D. Turn agitator on and load low density materials first (i.e. seed).**
- E. Continue slowly filling tank with water while loading fiber matrix into tank.
- F. Consult loading chart on the back to determine the number of bags to be added for desired area and application rate.
- G. SMM, BFM, HP-FGM or ET-FGM should be completely loaded before water level reaches 75% of the top of tank.
- H. Top off with water and mix until all fiber is fully broken apart and hydrated (minimum of 10 minutes — increase mixing time when applying in cold conditions). This is very important to fully activate the bonding additives and to obtain proper viscosity.
- I. Add fertilizer.
- J. Shut off recirculation valve to minimize potential for air entrainment within the slurry.
- K. Slow down agitator and start applying with a 50-degree fan tip nozzle.
- L. Spray in opposing directions for maximum soil coverage.

**Depending on site conditions, SMM, BFM, HP-FGM or ET-FGM may be applied in a one-step process where all components may be mixed together in single tank loads. Consult with Manufacturer for further details.*

***Do not add tackifiers or polymers.*

Loading Chart for Profile's SMM, BFM, HP-FGM and ET-FGM

Tank Size (liters)	# of 22.7-kg bales	(kg)	Displacement (liters)	2,800 kg/ha		3,400 kg/ha		4,000 kg/ha		4,500 kg/ha		5,000 kg/ha	
				m ²	ha	m ²	ha	m ²	ha	m ²	ha	m ²	ha
946	2	45	1,060	162	0.016	133	0.013	113	0.011	101	0.010	91	0.009
1,893	4	91	2,120	324	0.032	267	0.027	227	0.023	202	0.020	181	0.018
2,839	6	136	3,180	486	0.049	400	0.040	340	0.034	302	0.030	272	0.027
3,785	8	181	4,240	648	0.065	534	0.053	454	0.045	403	0.040	363	0.036
5,678	12	272	6,359	972	0.097	800	0.080	680	0.068	605	0.060	544	0.054
7,571	16	363	8,479	1,296	0.130	1,067	0.107	907	0.091	806	0.081	726	0.073
9,464	20	454	10,599	1,620	0.162	1,334	0.133	1,134	0.113	1,008	0.101	907	0.091
11,356	24	545	12,719	1,944	0.194	1,601	0.160	1,361	0.136	1,210	0.121	1,089	0.109
13,249	28	636	14,839	2,268	0.227	1,868	0.187	1,588	0.159	1,411	0.141	1,270	0.127

Additional Notes:

- For hose applications, 16 kg/378 liters is recommended.
- Rough surfaces (rocky terrain, cat tracks, ripped soils, etc.) may require additional product to achieve 100% coverage.
- Be sure to allow for residual material in tank on subsequent applications.

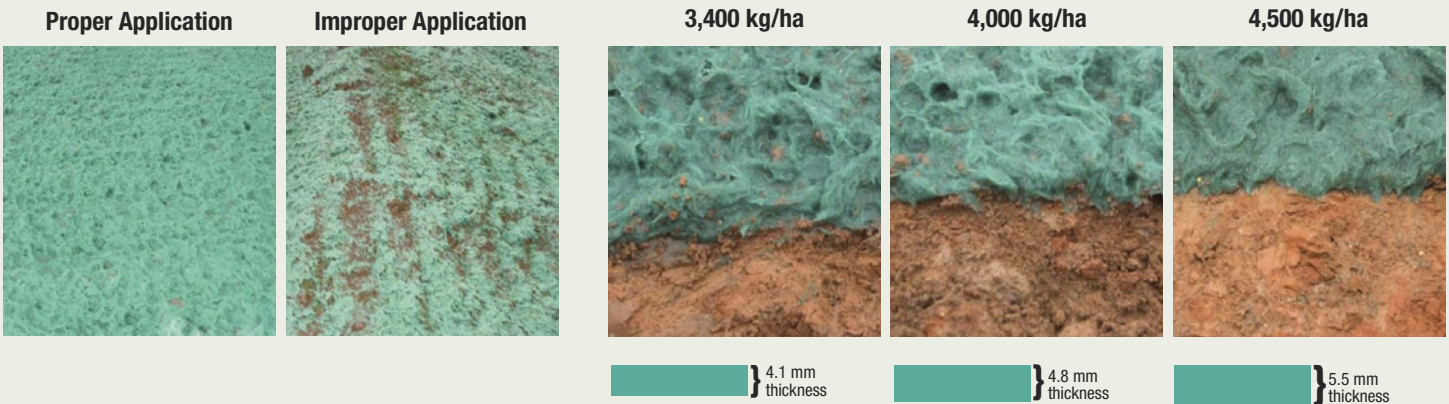
Application Rates	
Slope Condition	SI
≤ 4H to 1V	2,800 kg/hectare
> 4H to 1V and ≤ 3H to 1V	3,400 kg/hectare
> 3H to 1V and ≤ 2H to 1V ¹	3,900 kg/hectare
> 2H to 1V and ≤ 1H to 1V ²	4,500 kg/hectare
> 1H to 1V ³	5,100 kg/hectare
Below ECB or TRM	1,700 kg/hectare
As infill for TRM ⁴	3,900 kg/hectare

Slope Interruption Limits*	
Product Category	Length (m)
SMM	15
BFM	23
HP-FGM	30
ET-FGM	38

*Listed slope interruption limits are for product applications on a 3H:1V slope. For application on steeper slopes, slope interruption lengths may need to be decreased.

¹SMM not recommended for slopes greater than 2H:1V.
²BFM not recommended for slopes greater than 1H:1V.
³HP-FGM or ET-FGM recommended for slopes greater than 1H:1V.
⁴Use only approved and tested TRMs to create the GreenArmor System.

Visual Key for Proper Application
(Flexterra HP-FGM shown below)



PROFILE Products LLC
750 Lake Cook Road, Suite 440
Buffalo Grove, IL 60089
(800) 508-8681
www.profileproducts.com

U.S. Patent #'s: 5,942,029; 5,779,782; 5,741,832; 6,360,478; 7,752,804

Hydro-Blanket®

Flexterra® HP-FGM

CocoFlex® ET-FGM

Terra-Matrix™ SMM

